



MARC Magician Professional How-To: Global Editing





**MARC Magician
Professional
How-To:
Global Editing**

MARC Magician Professional has several options for making global changes to your records, including adding a field, finding & replacing text, fixing capitalization, and much more.

This overview provides a very basic outline of the global editing procedure. For more detailed information, including two tutorials on Global Editing, see the “MARC Magician User's Guide” available for review or download [HERE](#).



**MARC Magician
Professional
How-To:
Global Editing**

IMPORTANT

Before you perform any Global Edit function...

Back up your database.

Global Edit tools are a fast way to make changes to many records at once. However, once a Global Edit runs, it is permanent.

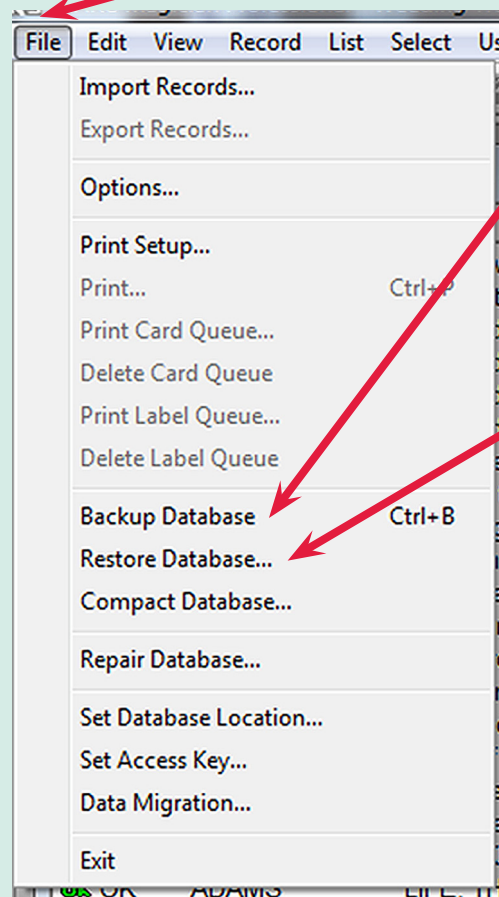
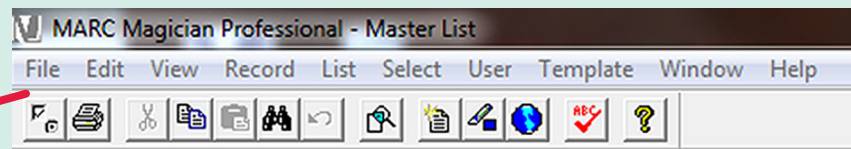
If you've made a mistake using a Global Edit tool, you won't be able to undo it easily, and a mistake here can cost you hours of work, and the potential for unrecoverable lost data.



MARC Magician Professional How-To: Global Editing

Backing up your database

Go to the File menu.



Select Backup Database.

You don't need to do anything else to assure that a backup file for your current database is safe.

Should you make any editing mistakes, restore the previous database by clicking on Restore Database and click on the most recent file.

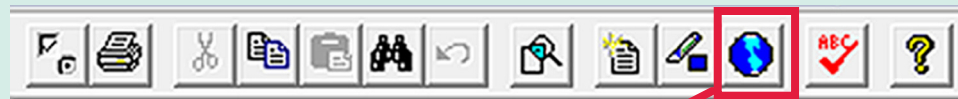
Now you can begin a Global Edit.



MARC Magician Professional How-To: Global Editing

Global Edit Options

To see the Global Edit options, click on the Global Edit button in the navigation bar.



Check Spelling...	F8
Find and Replace...	
Change Template...	
Add Field...	
Add Subfield...	
Change Field...	
Change Indicator for Field...	
Change Subfield...	
Change Subfield Text...	
Change Control Field Value...	
Delete Fields...	
Delete Subfields...	
Delete Subject Headings...	
Fix Capitalization...	
Force Text into Subfield...	
Rearrange Subfields...	

The names of the tools are self explanatory.

The advantage to global editing is the ability to select a group of records with common problems and then fix them all with one action.

In this How-To, we'll review each tool and what it can do.

Go to the "MARC Magician User's Guide" for an indepth review of specific commonly used Global Edits, and two step-by-step tutorials on Global Editing.



MARC Magician Professional How-To: Global Editing

Before you can use any Global Edit tool, you need to select the records to be edited. To review how to select records, go to the How-To on Selecting & Creating Records.

Or go to Tutorial 4 - Working with Lists, in the "MARC Magician User's Guide" [HERE](#).

When changing many records with a Global Edit tool, it's good practice to start out with the Prompt me for each change box checked.

Once you've edited and checked a few records for accuracy, you can uncheck this box, and do the rest of the records in one batch.

Global Editing Tips

Find and Replace

Fields to look in:

- ☒ All
- ☐ Selected

Clear Selected

Fields to search:

- ☐ Main entries
- ☐ Titles
- ☐ Editions, imprint, etc.
- ☐ Physical description
- ☐ Notes

Examples: 100a, 245, 500-599, 610
001-999
001, 003

Text to find and replace:

Find what:

☐ Match case ☒ Whole words only

Replace with:

Warning: You can't "Undo" to cancel changes made here.

☒ Prompt me for each change

OK Cancel Help

Remember, you can't "Undo" Global Edits.



MARC Magician Professional How-To: Global Editing

Global Edit - Check Spelling

This feature works much like other Spell Check tools you may have used. Monitor the words, and use the Change All button carefully, to avoid changing records you didn't intend to change.

Check Spelling...	F8
Find and Replace...	
Change Template...	
Add Field...	
Add Subfield...	
Change Field...	
Change Indicator for Field...	
Change Subfield...	
Change Subfield Text...	
Change Control Field Value...	
Delete Fields...	
Delete Subfields...	
Delete Subject Headings...	
Fix Capitalization...	
Force Text into Subfield...	
Rearrange Subfields...	

Check Spelling

\$245h - Not in dictionary:

[gideorecording]

Suggestions:

Record 1 of 134

WARNING!
Warning: You can't "Undo" to cancel changes made here.

Ignore Ignore All Add Revert Options...
Change Change All Close Help



MARC Magician Professional How-To: Global Editing

Global Edit - Find and Replace

Use this tool to eliminate obsolete codes or subject headings, or to standardize call numbers. Search all fields, or specify a particular field or subfield to change.

Check Spelling...	F8
Find and Replace...	
Change Template...	
Add Field...	
Add Subfield...	
Change Field...	
Change Indicator for Field...	
Change Subfield...	
Change Subfield Text...	
Change Control Field Value...	
Delete Fields...	
Delete Subfields...	
Delete Subject Headings...	
Fix Capitalization...	
Force Text into Subfield...	
Rearrange Subfields...	

Find and Replace

Fields to look in:

☒ All ☐ Selected Clear Selected

☐ Main entries
☐ Titles
☐ Editions, imprint, etc.
☐ Physical description
☐ Notes

Fields to search: Examples: 100a, 245, 500-599, 610
001-999
001, 003

Text to find and replace

Find what:

☐ Match case ☒ Whole words only

Replace with:

Warning: You can't "Undo" to cancel changes made here.

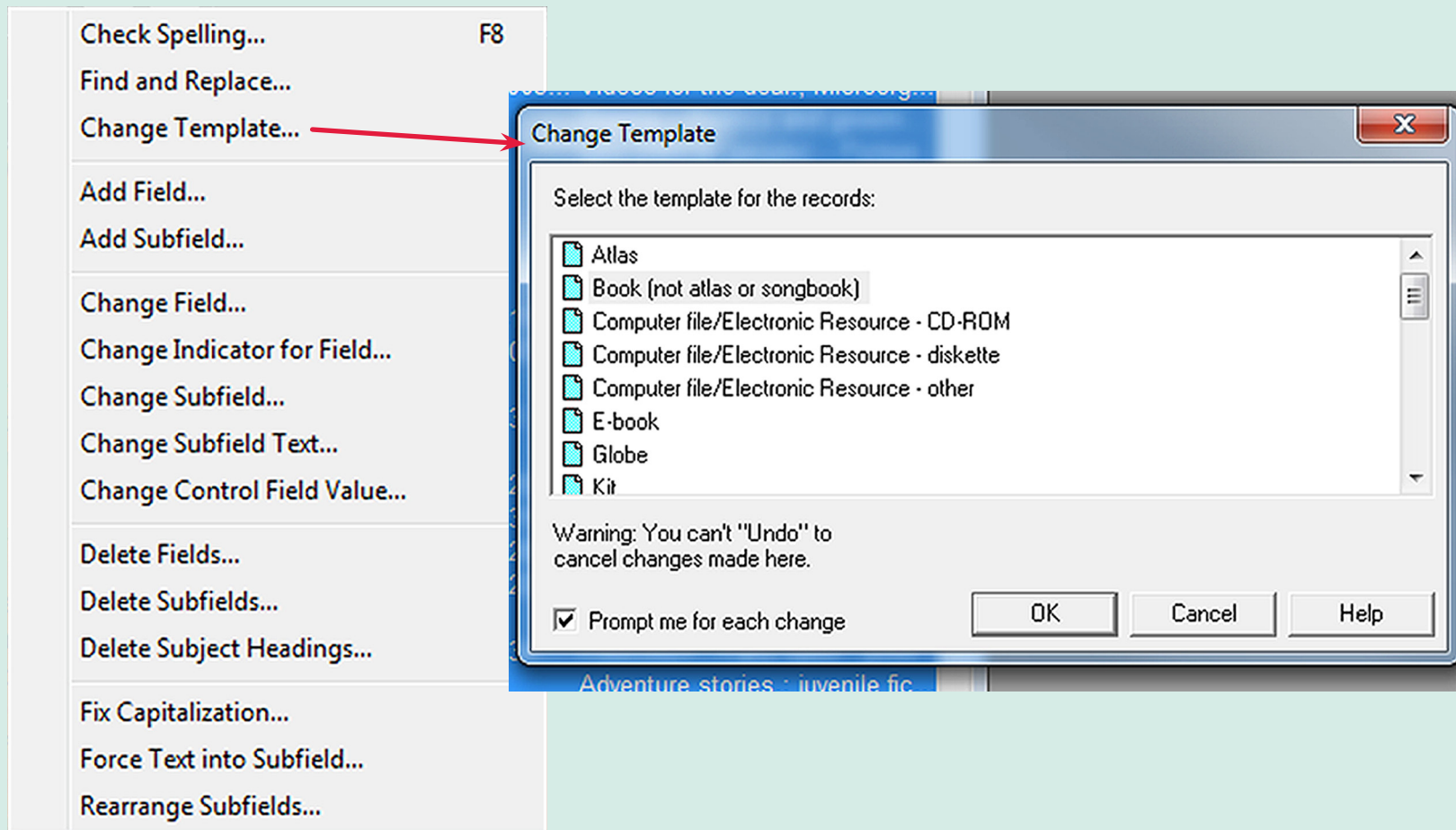
☒ Prompt me for each change OK Cancel Help



MARC Magician Professional How-To: Global Editing

Global Edit - Change Template

Use this tool to fix inaccurate template selections, for example, e-book records with a book template.





MARC Magician Professional How-To: Global Editing

Global Edit - Add Field

Use this tool to add fields not in the standard template.
Note: If commonly done, consider customizing your template to include the new field or subfield automatically, saving time.

F8

Check Spelling...
Find and Replace...
Change Template...
Add Field...
Add Subfield...
Change Field...
Change Indicator for Field...
Change Subfield...
Change Subfield Text...
Change Control Field Value...
Delete Fields...
Delete Subfields...
Delete Subject Headings...
Fix Capitalization...
Force Text into Subfield...
Rearrange Subfields...

Add Field

Field:
Indicator 1:
Indicator 2:
Subfields:

Warning: You can't "Undo" to cancel changes made here.
☒ Prompt me for each change

**Select from the menu,
or enter it in the field box
manually.**

Select Field

Select field
☒ Select from list
☐ Select from text box
Field:
Examples: 245

Subjects

- ☐ 600 (Subject Added Entry -- Personal Name)
- ☐ 610 (Subject Added Entry -- Corporate Name)
- ☐ 611 (Subject Added Entry -- Meeting Name)
- ☐ 630 (Subject Added Entry -- Uniform Title)
- ☐ 648 (Subject Added Entry -- Chronological Term)
- ☒ 650 (Subject Added Entry -- Topical Term)
- ☐ 651 (Subject Added Entry -- Geographic Name)
- ☐ 653 (Index Term -- Uncontrolled)
- ☐ 654 (Subject Added Entry -- Faceted Topical Term)



MARC Magician Professional How-To: Global Editing

Global Edit - Add Subfield

Check Spelling...
Find and Replace...
Change Template...
Add Field...
Add Subfield...
Change Field...
Change Indicator for Field...
Change Subfield...
Change Subfield Text...
Change Control Field Value...
Delete Fields...
Delete Subfields...
Delete Subject Headings...
Fix Capitalization...
Force Text into Subfield...
Rearrange Subfields...

Add Subfield

Subfield to add
Field:
Subfield:

Text to put into subfield

**Select from the menu,
or enter it in the field box
manually.**

Advanced >>

Warning: You can't "Undo" to
cancel changes made here.

☒ Prompt me for each change

OK Cancel Help

Select Subfield

Select subfield

☒ Select from list

Clear Selected

- ☒ 110 (Main Entry -- Corporate Name)
- ☐ \$0 (Authority record control number)
- ☐ \$4 (Relator code)
- ☐ \$6 (Linkage)
- ☐ \$a (Corporate name or jurisdiction name as entry eler
- ☐ \$b (Subordinate unit)
- ☐ \$c (Location of meeting)
- ☐ \$d (Date of meeting or treaty signing)
- ☐ \$e (Relator term)

☐ Select from text box

Field and subfield

Examples: 650x

OK Cancel Help



MARC Magician Professional How-To: Global Editing

Global Edit - Change Field

Use this tool to change fields, for example, the old 440 field to 490. Either select the field to change from the menu, or, if you know both the old and new fields, as in the example above, you can just type them in.

Check Spelling...	F8
Find and Replace...	
Change Template...	
Add Field...	
Add Subfield...	
Change Field...	
Change Indicator for Field...	
Change Subfield...	
Change Subfield Text...	
Change Control Field Value...	
Delete Fields...	
Delete Subfields...	
Delete Subject Headings...	
Fix Capitalization...	
Force Text into Subfield...	
Rearrange Subfields...	

Change Field

Change field

Into field

Warning: You can't "Undo" to cancel changes made here.

☒ Prompt me for each change

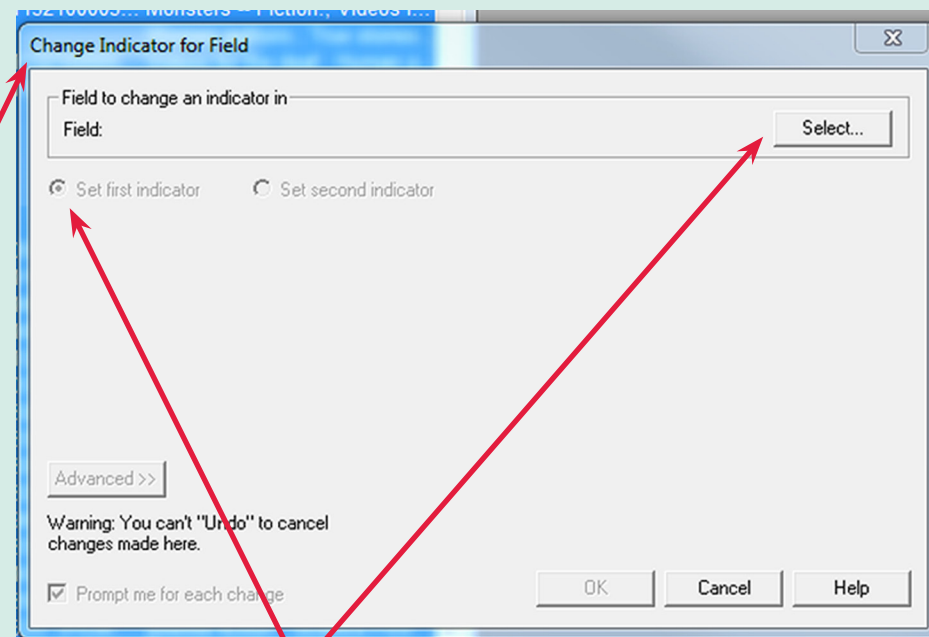
The Into Field box isn't active until you've chosen a field to change.



MARC Magician Professional How-To: Global Editing

Check Spelling...	F8
Find and Replace...	
Change Template...	
Add Field...	
Add Subfield...	
Change Field...	
Change Indicator for Field...	
Change Subfield...	
Change Subfield Text...	
Change Control Field Value...	
Delete Fields...	
Delete Subfields...	
Delete Subject Headings...	
Fix Capitalization...	
Force Text into Subfield...	
Rearrange Subfields...	

Global Edit - Change Indicator for Field



Select the field to change from the menu, and choose whether to set the change as the 1st or 2nd indicator.



MARC Magician Professional How-To: Global Editing

Global Edit - Change Subfield

Check Spelling...	F8
Find and Replace...	
Change Template...	
Add Field...	
Add Subfield...	
Change Field...	
Change Indicator for Field...	
Change Subfield...	
Change Subfield Text...	
Change Control Field Value...	
Delete Fields...	
Delete Subfields...	
Delete Subject Headings...	
Fix Capitalization...	
Force Text into Subfield...	
Rearrange Subfields...	

Change Subfield

Field to change the subfield
Field: Select...

Current subfield

New subfield

Advanced >>

Warning: You can't "Undo" to cancel changes made here.

☒ Prompt me for each change

OK Cancel Help

Select the field and then subfield to change from the menu.

As with the other Edit options, if you know the specific fields you want to change, it isn't necessary to look for them in the menu.



MARC Magician Professional How-To: Global Editing

Check Spelling...	F8
Find and Replace...	
Change Template...	
Add Field...	
Add Subfield...	
Change Field...	
Change Indicator for Field...	
Change Subfield...	
Change Subfield Text...	
Change Control Field Value...	
Delete Fields...	
Delete Subfields...	
Delete Subject Headings...	
Fix Capitalization...	
Force Text into Subfield...	
Rearrange Subfields...	

Global Edit - Change Subfield Text

Add Subfield

Subfield to add
Field: Select...
Subfield:

Text to put into subfield—

Get Text...

Advanced >>

Warning: You can't "Undo" to cancel changes made here.

☒ Prompt me for each change

OK Cancel Help

Select the field and subfield to change from the menu. Enter new text in the box.

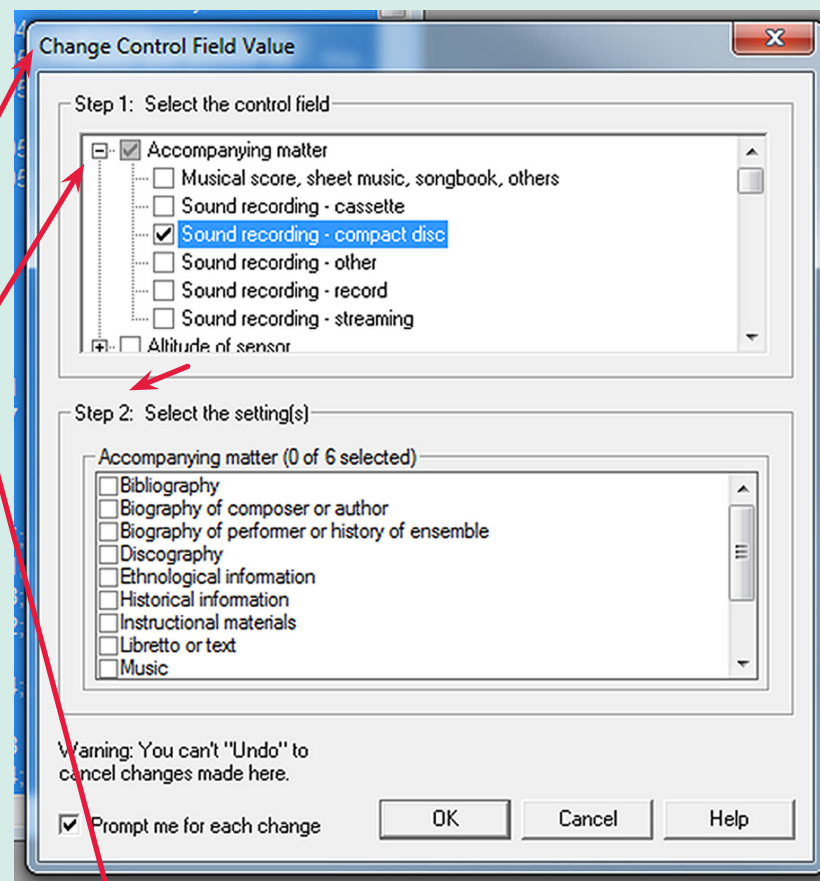
Remember, you will be changing all of the old text in the field to the new text. Proceed carefully to avoid accidentally eliminating text you want to keep.



MARC Magician Professional How-To: Global Editing

Global Edit - Change Control Field Value

Check Spelling...	F8
Find and Replace...	
Change Template...	
Add Field...	
Add Subfield...	
Change Field...	
Change Indicator for Field...	
Change Subfield...	
Change Subfield Text...	
Change Control Field Value...	
Delete Fields...	
Delete Subfields...	
Delete Subject Headings...	
Fix Capitalization...	
Force Text into Subfield...	
Rearrange Subfields...	



**Select the control field and
settings from the menu.**



MARC Magician Professional How-To: Global Editing

Global Edit - Delete Fields & Subfields

Check Spelling...	F8
Find and Replace...	
Change Template...	
Add Field...	
Add Subfield...	
Change Field...	
Change Indicator for Field...	
Change Subfield...	
Change Subfield Text...	
Change Control Field Value...	
Delete Fields...	
Delete Subfields...	
Delete Subject Headings...	
Fix Capitalization...	
Force Text into Subfield...	
Rearrange Subfields...	

Delete Fields

Select fields

Clear Selected

Subjects

- ☐ 600 (Subject Added Entry -- Personal Name)
- ☐ 610 (Subject Added Entry -- Corporate Name)
- ☒ 611 (Subject Added Entry -- Meeting Name)
- ☐ 630 (Subject Added Entry -- Uniform Title)
- ☐ 648 (Subject Added Entry -- Chronological Term)
- ☐ 650 (Subject Added Entry -- Topical Term)

Fields

Examples: 246 650 900-999

Advanced >>

Advanced criteria are not available when you delete more than one field.

Warning: You can't "Undo" to cancel changes made here.

☒ Prompt me for each change

OK Cancel Help

Delete Subfields

Select subfields

Clear Selected

222 (Key Title)

- ☐ \$6 (Linkage)
- ☐ \$a (Key title)
- ☐ \$b (Qualifying information)

240 (Uniform Title)

Subfields

Examples: 245a 650x

Advanced >>

Advanced criteria are not available when you delete more than one subfield.

Warning: You can't "Undo" to cancel changes made here.

☒ Prompt me for each change

OK Cancel Help



MARC Magician Professional How-To: Global Editing

Global Edit - Delete Subject Headings

Check Spelling...	F8
Find and Replace...	
Change Template...	
Add Field...	
Add Subfield...	
Change Field...	
Change Indicator for Field...	
Change Subfield...	
Change Subfield Text...	
Change Control Field Value...	
Delete Fields...	
Delete Subfields...	
Delete Subject Headings...	
Fix Capitalization...	
Force Text into Subfield...	
Rearrange Subfields...	

Delete Subject Headings

Subject headings to delete:

<input type="checkbox"/> Library of Congress Subject Headings	<input type="checkbox"/> Canadian Subject Headings
<input type="checkbox"/> LC subject headings for children's literature	<input type="checkbox"/> Répertoire des vedettes-matière
<input type="checkbox"/> Medical Subject Headings	<input type="checkbox"/> Sears specified in \$2
<input type="checkbox"/> National Agricultural Library subject headings	

Warning: You can't "Undo" to cancel changes made here.

☒ Prompt me for each change

OK Cancel Help



MARC Magician Professional How-To: Global Editing

Global Edit - Fix Capitalization

Check Spelling... F8

Find and Replace...

Change Template...

Add Field...

Add Subfield...

Change Field...

Change Indicator for Field...

Change Subfield...

Change Subfield Text...

Change Control Field Value...

Delete Fields...

Delete Subfields...

Delete Subject Headings...

Fix Capitalization...

Force Text into Subfield...

Rearrange Subfields...

Fix Capitalization

Fields to fix:

- ☒ Fix basic fields (all except numbers, holdings, local, and user-defined fields)
In addition to the basic fields, you can optionally choose to fix number, holdings, local, and user-defined fields.
 - ☐ Convert number fields (010-099, 001 and 003) to lower case.
 - ☐ Convert holdings fields to lower case.
 - ☐ Convert local fields (any field with a 9 in the tag) to lower case. Field 490 is always checked.
 - ☐ Convert user-defined fields to lower case.
- ☐ Fix only the fields and subfields specified here:

Select subfield(s):

- ☒ All
- ☐ Selected

Clear Selected

☒ Main entries
☒ Titles
☒ Editions, imprint, etc.
☒ Physical description
☒ Notes
☒ Subjects

Subfields:

Examples: 245ab 500 650x

☒ Check only subfields that are in all upper case

Warning: You can't "Undo" to cancel changes made here.

☒ Prompt me for each change

OK Cancel Help

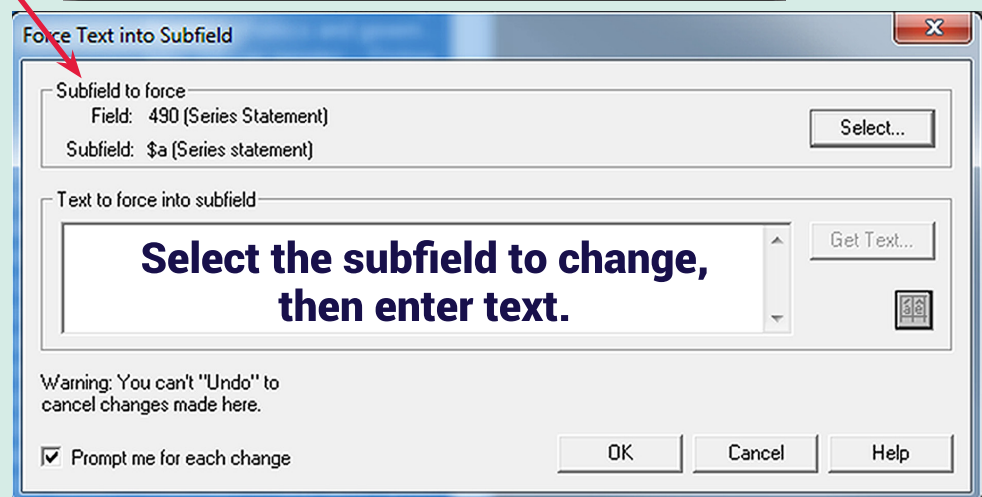
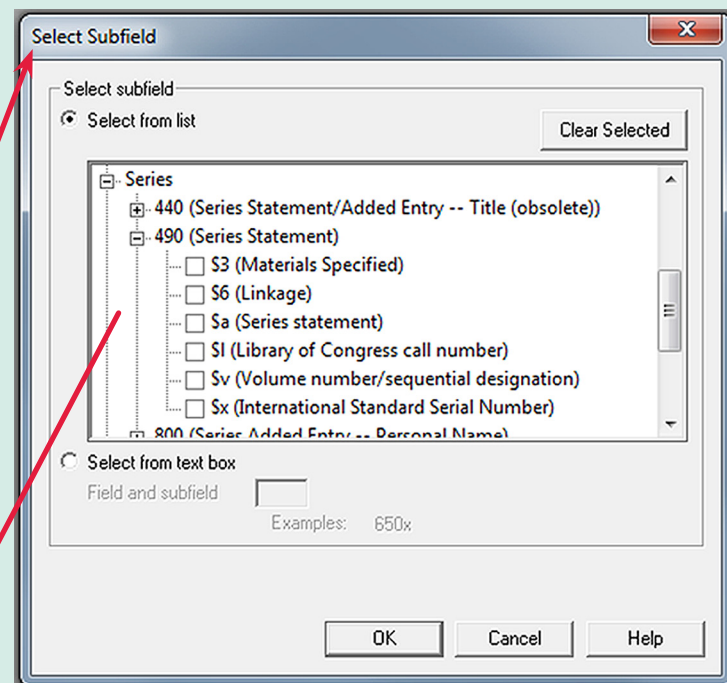


MARC Magician Professional How-To: Global Editing

Global Edit - Force Text into Subfield

Use Force Text into Subfield to put in copy information, such as vendor, funding source, etc.. **BE CAREFUL-** Force Text into Subfield replaces existing information in the subfield. For example, you could write over existing Follett categories.

Check Spelling...	F8
Find and Replace...	
Change Template...	
Add Field...	
Add Subfield...	
Change Field...	
Change Indicator for Field...	
Change Subfield...	
Change Subfield Text...	
Change Control Field Value...	
Delete Fields...	
Delete Subfields...	
Delete Subject Headings...	
Fix Capitalization...	
Force Text into Subfield...	
Rearrange Subfields...	





MARC Magician Professional How-To: Global Editing

Global Edit - Rearrange Subfields

Check Spelling...	F8
Find and Replace...	
Change Template...	
Add Field...	
Add Subfield...	
Change Field...	
Change Indicator for Field...	
Change Subfield...	
Change Subfield Text...	
Change Control Field Value...	
Delete Fields...	
Delete Subfields...	
Delete Subject Headings...	
Fix Capitalization...	
Force Text into Subfield...	
Rearrange Subfields...	

Rearrange Subfields

Field to rearrange subfields in:
648 (Subject Added Entry -- Chronological Term) Select...

Subfields to change:

Current subfield	New subfield	Only when

Add...
Up Delete
Dwn Change...

All other subfields:
☒ Keep
☐ Delete

Order of subfields:
☒ Alphabetic order
☐ Same order as in original field
☐ Order as shown in the "New subfield" column

Advanced >>

Warning: You can't "Undo" to cancel changes made here.

☒ Prompt me for each change

OK Cancel Help

Use this tool to reorganize subfields within a certain field. Add, delete or change the fields, as well as determine the subfield order with menu options.



**MARC Magician
Professional
How-To:
Global Editing**

**This is the end of our MARC Magician
Professional tutorial on global editing.
To find out more about other
MARC Magician tools and features:**

- use the built-in help button identified by a ?**
- check out our other How-To slideshows
on the MARC Magician tutorial page [HERE](#)**
- or read the “MARC Magician User’s Guide”
available to review or download [HERE](#)**

Thank you!